

**KEEPS YOU ROLLIN'!**  
2024 NEW PRICING | APR. 1<sup>ST</sup> TO JUN. 30<sup>TH</sup>



**WESTTRANS**

# SPRING

## SPECIAL PRICE

COMMITTED SERVICE SINCE 1967  
YOUR TRUCK OR TRAILER DESERVES THE BEST...



SPECIAL OFFER  
**SUPER PRICE**

**\$299<sup>95</sup>**  
REG. 355.21

76" Overall | Length | 24" Width  
3" Flange | Limited Lifetime Warranty

**Poly Single Axle Fender Pair**  
# NF180PX

WWW.WESTTRANS.COM

Winnipeg Branch: 515 Oak Point Highway, Winnipeg, MB (204) 633-9272  
Regina Branch: 559 McDonald St. Regina, SK (306) 721-7211

### Poly Half Tandem Fender Pair

# NF66PX

**\$329<sup>95</sup>**  
REG. 392.84



### SS 16G NR Half Fenders-Pair

# NF1066SSNR

**\$429<sup>95</sup>**  
REG. 564.27



**NU-LINE**

### Chrome Mud Flap Hangers

# NF3345C

**\$229<sup>95</sup>**  
REG. 274.92



### Poly Fenders Pair

# N1900KIT

**\$119<sup>95</sup>**  
REG. 140.27



### Painted Steel Mud Flap Hangers

# NF3345P

**\$169<sup>95</sup>**  
REG. 201.24



### Poly Bracket Kit Black

# NKIT50P

**\$40<sup>99</sup>**  
REG. 46.53



### Chrome Mud Flap Hangers

# NF30C

**\$179<sup>95</sup>**  
REG. 208.39



### Single Axle Poly Mounting Kit

# N180PMK

**\$229<sup>79</sup>**  
REG. 278.78



### Painted Mud Flap Hangers

# NF30P

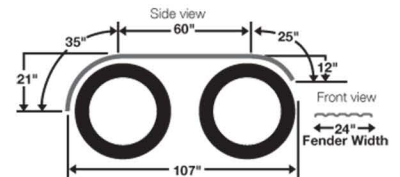
**\$109<sup>95</sup>**  
REG. 132.74



**LIMITED OFFER**

### GZ Full Fenders Pair

# N120G



**\$389<sup>95</sup>**  
REG. 485.13



While Westrans takes great care to ensure its advertising is accurate, errors or inaccuracies may occur. Westrans may correct errors or inaccuracies, and change or update information on this flyer or its website at any time without notice, including changing the prices or availability of items.

Some items may not be stocked in all stores. Westrans reserves the right to limit quantities. Freight expenses may apply. Taxes and enviro fees are extra. Some conditions apply on warranty offers; see warranty documents for details. Prices in effect at both Westrans Winnipeg, MB branch and Westrans Regina, SK branch.

**SPRING  
SPECIAL PRICE  
2024**

**Rear Drive Pre Set Hub Assy. 23K**  
# 10082217

**\$569<sup>98</sup>**  
REG. 799.55

- Made for R Drive long barrel axle applications
- Stamped ABS ring
- Hub piloted - 10 stud mounting



**Trailer Pre Set Hub Assy TN**  
# 10082227

**\$411<sup>95</sup>**  
REG. 550.70

- Made for Trailer TN axles
- Nonstamped ABS ring
- Hub piloted - 10 stud mounting

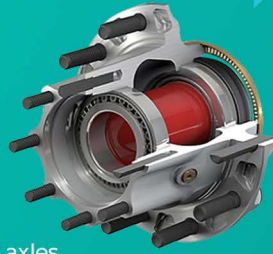


special offer  
**SUPER SALE**  
DISCOUNT

**Rear Drive Hub Assy. 26K**  
# 10082219

**\$549<sup>97</sup>**  
REG. 736.58

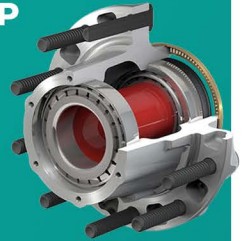
- Stamped ABS ring
- Hub piloted - 10 stud mounting
- Made for R Drive long barrel iron side pull axles
- Easier installation and maintenance than conventional assemblies



**Trailer Pre set Hub Assy. TP**  
# 10082229

**\$659<sup>95</sup>**  
REG. 921.42

- Made for Trailer TP axles
- Stamped ABS ring
- Hub piloted - 10 stud mounting



**Front Hub Service Kit FF**  
# 10081727

**\$189<sup>95</sup>**  
REG. 250.85

**Trailer Hub Service Kit TN**  
# 10081730

**\$269<sup>95</sup>**  
REG. 351.62



**Rear Drive Hub Service Kit**  
# 10081729

**\$233<sup>79</sup>**  
REG. 313.11

**Trailer Hub Service Kit TP**  
# 10081731

**\$319<sup>95</sup>**  
REG. 418.57

- Quality ConMet bearing, seal and spacers included
- Less cost, labor and downtime than bringing your vehicle in for service

**Front Hub Spacer and Seal Kit**  
# 10081518

**\$89<sup>95</sup>**  
REG. 114.15

**Rear Drive Spacer and seal Kit**  
# 10081520

**\$93<sup>29</sup>**  
REG. 124.92



**CON MET**

**NAVISTAR**  
SUPPLIER EXCELLENCE AWARDS

**WWW.WESTRANS.COM**



**HOT SALE**



**20 Ton Wide Truck Ramps**  
# 93201

**\$1699<sup>95</sup>** REG. 1750.26

- Specifically designed for heavy-duty tasks
- Steel wheels design for extra durability
- Long T-handle increases mobile efficiency
- Sold and to be used only in pairs
- Wider width for stability



**Clutch Jack 500lbs**  
# 40500

**\$1299<sup>95</sup>** REG. 1389.09

- 1-3/4" and 2" spline rotates 360°, turns side to side and vertically tilts for precise clutch alignment.
- 4 swivel casters maneuver jack with ease.



**3.5 Ton Low Profile Magic Lift**  
# 29038

**\$449<sup>95</sup>** REG. 510.00

- Capacity: 3.5 Tons
- Minimum Height: 4"
- Maximum Height: 21"
- Gross Weight: 83.7 Lbs
- U-Joint assembly for precise load control



**22 Ton Air Hydraulic Axle Jack**  
# BH6221

**\$1099<sup>95</sup>** REG. 1202.18

- 1" and 2.5" Adapters Standard
- A choice of three handle angles:
  - 90° for space saving storage
  - 45° for easy carrying movement
  - 0° for access to lifting point
- Heat-treated extension screw allows low pick-up height adjustment and maximum lift height



**Transmission Jack HD**  
# 43000

- The adjustable head can be tilted forward, backward and side to side for optimum alignment of transmission bolt patterns and pins
- Hydraulic system is protected from internal damage by a patented by-pass mechanism

**\$2599<sup>95</sup>** REG. 2915.54



**36" Plastic Creeper**  
# 91900

**\$79<sup>59</sup>** REG. 79.58

- 300 lbs capacity
- 6 oil resistant 2" swivel casters
- Padded head rest
- Ergonomic lightweight hdpe body



**Flashlight Rechargeable 6000 Lumens**  
# 579.MFL2006

**\$99<sup>95</sup>** REG. 130.56



**Flashlight Rechargeable 700 Lumens**  
# 579.MFL2001

**\$25<sup>99</sup>** REG. 30.44



**OMEGALIFT™**  
EQUIPMENT

**FF Steer Axle Quick Tie Assy**  
# QT967SS



**\$429<sup>95</sup>** REG. 651.84



# QT108SB

**SPRING**  
SPECIAL PRICE  
**2024**

**Tracker Spring Kits**  
# 17-148

**\$21<sup>62</sup>**  
REG. 25.71

- Coiled cable spring kit with 20" single heavy-duty spring, with QWIK-SNAP™



**Swinger Gladhand Service**  
# 12-4506



- 45° with service gladhand, blue, 3/8" female pipe thread, bottom

**Swinger Gladhand Emrgency**  
# 12-4508



- 45° with emergency gladhand, red, 3/8" female pipe thread, bottom

**\$43<sup>71</sup>**  
REG. 51.98

**3 in 1 Cable 12ft.**  
# 92300-144

**\$176<sup>97</sup>**  
REG. 210.46



**3 in 1 Cable 15ft.**  
# 92300-180

**\$204<sup>49</sup>**  
REG. 243.18

**Coiled Air Gladhand Extensions**  
# 12-600

**\$28<sup>22</sup>**  
REG. 33.56

- Pair (red and blue), clamshell



**15% DISCOUNT**

**Tender Spring Assembly**  
# 17-1484



**\$40<sup>44</sup>**  
REG. 48.10

**Tender Spring Assembly 20.5"**  
# 17-1481



**\$48<sup>99</sup>**  
REG. 58.26

**Tender Spring Assembly 20.5"**  
# 17-1488



**\$35<sup>53</sup>**  
REG. 42.25

**Hose Holder, Qwik-Clamp**  
# 17-180



**\$22<sup>24</sup>**  
REG. 26.45

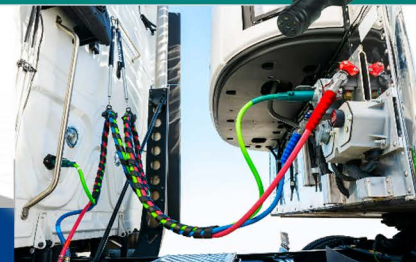
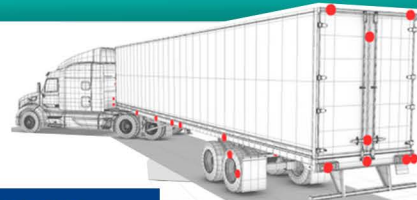
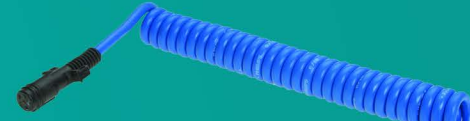
**Gladhand Lock**  
# 12-700



**\$27<sup>29</sup>**  
REG. 32.45

**6-Way Cable Assy.**  
# 19-6715

**\$78<sup>55</sup>**  
REG. 93.42



**SAFETY, EFFICIENCY & RELIABILITY WITH THE PAK**

How often have you driven down the highway and seen a bird's nest of tangled green, red, and [...]

**PHILIPS**

**TIGER TOOL**

AT WESTRANS



CALL US FOR PRICING

**204 633 9272**



**Wheel Stud Service Kit**  
# 10608



**Heavy Duty Yoke Puller**  
# 10803



**King Pin Press**  
# 90150



**Pitman Arm Service Kit**  
# 20388



**Slack Adjuster Service Kit**  
# 20602



**Leaf Spring Pin & Bushing Service Kit**  
# 15000

**KEEPS YOU ROLLIN'!**

**5**



**Tire Bead Seater 5 Gal**  
# 579.1011

**\$230<sup>33</sup>**  
REG. 269.66



**HOT SALE**

Making our best even better for you

**AUTOMANN**   
KEEPING TRUCKS MOVING



**\$31<sup>06</sup>**  
REG. 36.36

**Green Extendable Wash Brush 42"-72"**  
# 579.WB4272E



**\$34<sup>46</sup>**  
REG. 40.34

**Yellow Extendable Wash Brush 42"-68"**  
# 579.WB4268E

**\$15<sup>11</sup>**  
REG. 17.69



**Green Extendable Squeegee 31"-55"**  
# 579.WS3155E

**GLOBE**  
COMMERCIAL PRODUCTS



**Red-Medium Dry Excellent Cut**  
# 1018-1

**\$11<sup>83</sup>**  
REG. 14.01

**White-Medium Wet Wild Cut**  
# 1018-2

**\$18<sup>71</sup>**  
REG. 22.16

**Green -Medium Dry Minimum Cut**  
# 1018-2

**24" Medium Push Broom**  
# 4064

**\$55<sup>31</sup>**  
REG. 67.46



**24" Rough Push Broom**  
# 4066

**\$56<sup>59</sup>**  
REG. 69.01



**Stainless Steel Squeegee 10"**  
# 4430

**\$17<sup>01</sup>**  
REG. 20.75



**Stainless Steel Squeegee 18"**  
# 4432

**\$19<sup>95</sup>**  
REG. 24.33



**Stainless Steel Squeegee 30"**  
# 4091

**\$23<sup>87</sup>**  
REG. 29.12



**Associated Truckers Supply**  
(Canada) Inc.

**Stack Brush**  
# 200-01

**\$29<sup>93</sup>**  
REG. 35.44



**Stainless Steel Polishing Kit**  
# KR-MK-STR

**\$159<sup>73</sup>**  
REG. 189.15



**Aluminum Polishing Kit**  
# KR-MK-ALUM

**Black-Medium Wet Sharp Cut**  
# 1018-4

**\$17<sup>00</sup>**  
REG. 20.13



**\$19<sup>60</sup>**  
REG. 23.91



**4" Smart Eraser**  
# AST-400E



**\$3<sup>38</sup>**  
REG. 4.13

**Smart Eraser Arbor**  
# AST-400EAR

**Winch strap 4"x30' Strap with D-Ring**

# 43795-11-30

**\$17<sup>95</sup>**  
REG. 27.18



**15'x1" General Purpose Ratchet w/Padded Handle -4pk**

# SL91

**\$29<sup>95</sup>**  
REG. 40.66



**Winch strap 4"x30' Strap with Flat Hook**

# 43795-10-30

**\$15<sup>95</sup>**  
REG. 22.54



**2" x 30' Ratchet Strap w/43120-13 Wire Hooks**

# 45982-43



- Designed to secure cargo up to 3,333 lbs.
- 8.5" ratchet handle with aluminum grip
- 2" yellow latex-coated polyester webbing
- 2" narrow chromate-coated steel wire J-hooks

**\$19<sup>95</sup>**  
REG. 27.18

**Mini Ratchet Strap--1"x16'-Display Packaged**

# 43887-10

**\$11<sup>95</sup>**  
REG. 15.17



CALL US FOR PRICING

**204 633 9272**

**Corner Protector 4"-Plastic**

# 43986-10

**\$2<sup>29</sup>**  
REG. 2.85



**Plastic Corner Protector**

# 49584-10

**\$3<sup>79</sup>**  
REG. 4.92



**Elbows-Assorted Sizes 45 Degree -90 Degree**



**4" Lap Clamp**

# 33260

**\$11<sup>95</sup>**  
REG. 15.13



**5" Lap Clamp**

# 33262

**\$13<sup>95</sup>**  
REG. 16.75



**Muffler 5" In 5" Out**

# 22920

**\$119<sup>95</sup>**  
REG. 145.02



**BIG DEAL**

**Load Binder - 5/16" Ratchet 5,400 lbs. WLL**

# 45943-20

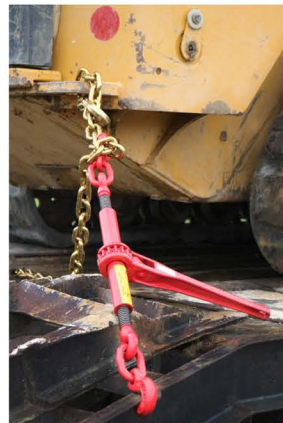
**\$37<sup>95</sup>**  
REG. 4.92



**Load Binder - 3/8" Ratchet 9,200 lbs. WLL**

# 45943-21

**\$44<sup>95</sup>**  
REG. 63.38



**Load Binder Chain - 3/8" X 20' w/ Clevis Hooks 6,600 lbs. WLL**

# 45881-11-20T

**\$69<sup>95</sup>**  
REG. 130.05



**Winch Bar-Combination Box End**

# 42313-12

**\$23<sup>95</sup>**  
REG. 30.46

- Tapered and angled at the end for easy operation with two knurled handle sections
- Heat-treated and cycle-tested materials for optimum strength and durability
- Flanged mushroom tip to prevent slippage
- Combination box end for releasing chain binders and for improved grip and leverage



**SPRING SPECIAL PRICE 2024**



Cargo Control, Simplified

**40CH CB Mobile Radio-40CH**  
# 29LTDFM

**\$209<sup>99</sup>**  
REG. 274.26

**Cobra**



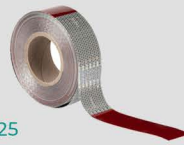
**3000 Watt Power Inverter**  
# PWD3000P

**\$485<sup>61</sup>**  
REG. 603.73



**2" x 150' Roll**  
# 41160

**\$99<sup>95</sup>**  
REG. 128.25



**Grote**

**4x6 Heated LED Low/High Beam**

**\$179<sup>95</sup>**  
REG. 222.92



**LED Magnetic Warning Lamp**

79202-5 79203-5  
**\$17<sup>95</sup>**  
REG. 19.76

**17" Low Profile LED Bar Lamp**



**LED Beacon Tall Dome**  
# 78063 Amber

**\$109<sup>95</sup>**  
REG. 132.12



PARTS	PARTS#	WAS	NOW
Front Steer Bearing Set	SET406	\$ 35.11	<b>SALE \$ 31.12</b>
Front Steer Bearing Set	SET413	\$ 51.10	<b>SALE \$ 45.29</b>
Rear Drive Bearing Set	SET401	\$ 62.50	<b>SALE \$ 55.40</b>
Rear Drive Bearing Set	SET403	\$ 74.32	<b>SALE \$ 65.87</b>
Trailer Bearing Set TN	SET413	\$ 51.10	<b>SALE \$ 45.29</b>
Trailer Bearing Set TN	SET414	\$ 81.91	<b>SALE \$ 72.60</b>
Trailer Bearing Set TP	SET415	\$ 88.03	<b>SALE \$ 78.02</b>
Rear Drive Bearing Set	SET429	\$ 119.61	<b>SALE \$ 106.02</b>
Rear Drive Bearing Set	SET430	\$ 100.01	<b>SALE \$ 88.64</b>

**NEW PRICE**



**NTN PRODUCTS AT WESTRANS!**  
WORLD-CLASS BEARING MANUFACTURER



**Cable And Circuit Tester**  
# 97101

**\$78<sup>58</sup>**  
REG. 93.39



**LED Signal Stat S/T/T 60 Series**  
# 6051/6051A

**\$29<sup>95</sup>**  
REG. 39.12



**Fire Extinguisher**  
# 466296MTL

**\$32<sup>95</sup>**  
REG. 37.41  
2.5lbs



**LED Signal Stat S/T/T 4" Round**  
# 4051/4051A

**\$21<sup>95</sup>**  
REG. 28.85



**LED Signal Stat 60 Series B/U**  
# 6060C

**\$65<sup>99</sup>**  
REG. 81.91



**Kidde**

**\$160<sup>26</sup>**  
REG. 181.91

**Fire Extinguisher**  
# 21008349